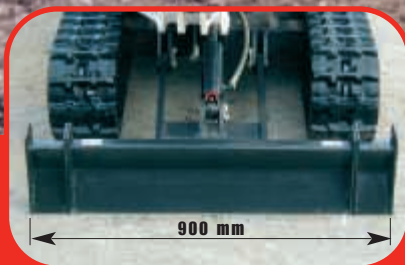
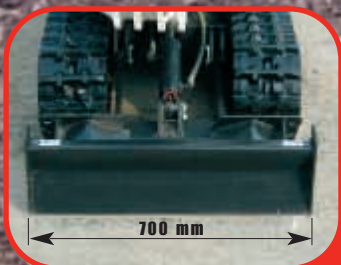


316

EXCAVATOR



Bobcat®

OPERATING WEIGHT	
- WITH RUBBER TRACKS & CANOPY	820 kg
TRAVEL SPEED	0 - 2 km/h
ENGINE	7.4 kW (10 HP)
BREAKOUT FORCE (over bucket cylinder)	830 daN
MAXIMUM DEPTH	1550 mm
EXPANDABLE UNDERCARRIAGE	700 - 900 mm



GENERAL INFORMATION

Operating weight with rubber tracks & canopy	820 kg
Travel speed	0 - 2 km/h
Controls: Vehicle	Two hand levers for control of speed and direction
Excavator function	Two levers control dipperstick, bucket, boom and slew. Hand lever for blade. Right foot control for boom offset. Left foot control for two-way auxiliary hydraulics. Left foot pedal for undercarriage expansion.



ENGINE

Make	Kubota
Model	D-722-E
Fuel	Diesel
Power (ISO 9249)	7.4 kW (10 HP) @ 2000 RPM
Displacement	0.719 l
Maximum torque (SAE J1349 GROSS)	39.2 Nm @ 1800 RPM
Number of cylinders	3
Bore x stroke	67 x 68 mm
Cooling system	Liquid
Starter	12 Volt, 0.8 kW
Alternator	12 Volt, 12 Amp.



SLEW SYSTEM

Slew drive	Orbital motor
Slew circle	Single row shear type ball bearings with internal gear
Slew speed	8.5 RPM
Boom swing	- left 87° - right 47°



BREAKOUT FORCE (ISO)

Over dipperstick cylinder	590 daN
Over bucket cylinder	830 daN



HYDRAULIC SYSTEM

Pump type	Double section gear pump
Capacity	2 x 10.2 l/min
Auxiliary flow	20.4 l/min
System relief setting	16200 kPa
Control valves	9 spools, parallel type, open center



TRANSMISSION

Final drive	Each track independently driven by axial piston motor
Gradeability	48 % / 25°



BRAKES

Travel	Hydraulic lock in motor circuit
Slew	Hydraulic lock on motor and pin lock



UNDERCARRIAGE

Width of rubber track	180 mm
Number of track rollers	2 each side
Ground pressure	23.5 kPa

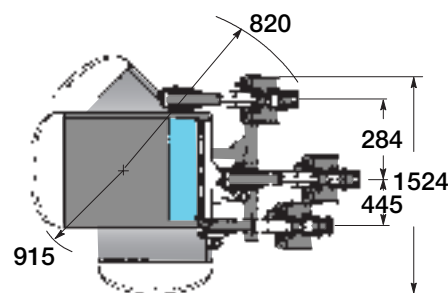
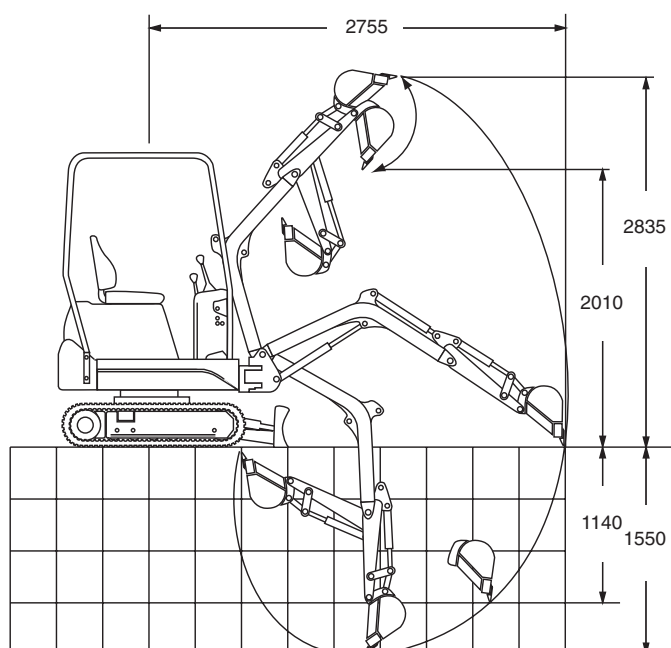


CAPACITIES

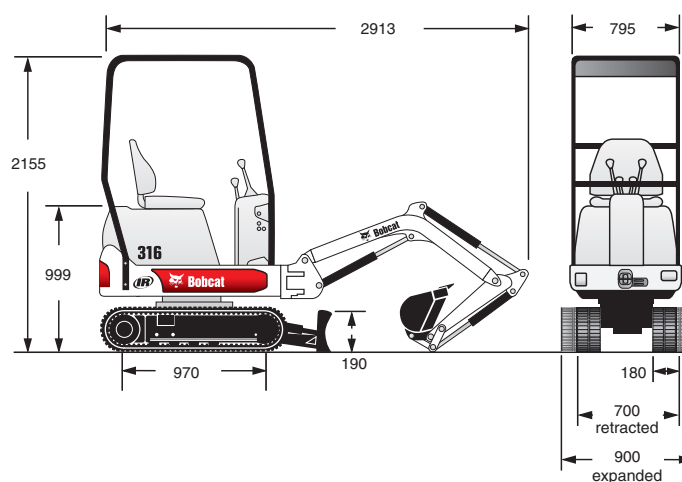
Fuel tank	9.0 l
Cooling system	3.8 l
Engine oil & filter	3.1 l
Hydraulic reservoir	9.5 l
Hydraulic system capacity	13.0 l

WORKING RANGE

All dimensions are in mm.



DIMENSIONS



BOBCAT EUROPE

J. Huysmanslaan, 59
B - 1651 LOT Belgium
Tel. +32 (0)2 371 68 11
Fax. +32 (0)2 371 69 01
E-mail: bobcat_europe@eu.bobcat.com
www.bobcat.com

An **IR** Ingersoll-Rand business

PROTECTION PLUS
Up to 3 Years Warranty
Get more info from your dealer

